

Business Software

Growth Stage Manufactures

Scott Nichols

8/22/2023

Golisano Institute for Sustainability

- 6 applied research centers focused around sustainable production
- \$14M+ annually in sponsored & external funding
- 3 graduate degrees in sustainability
- 120+ researchers, engineers, faculty, and staff many with in-depth industry experience



COE Project Examples

Remanufacturing



Durst US –
Printhead reman



Office of Naval
Research, USMC –
Component reman

Manufacturing Process Optimization



Markin – Process for
corrosion resistant
coating



Gunlocke –
Process efficiency

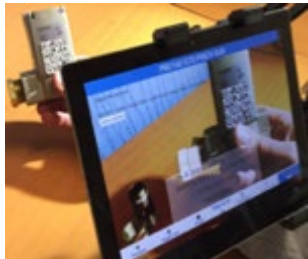


GW Lisk – Inspection
techn.

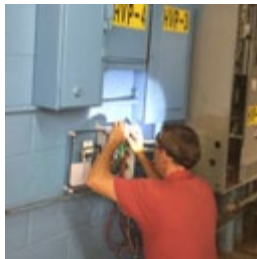


Alstom –
Process failure
mode analysis

Digital Manufacturing



Optipro, Optimax,
Harbec – Electronic
work instructions

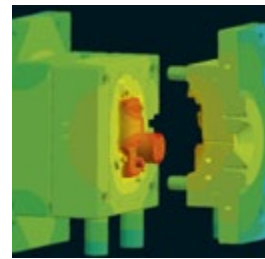


Acro –
IOT, Energy monitoring
and management

Product Development, and Design Optimization



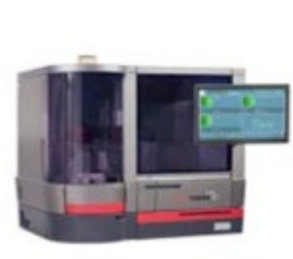
Dresser Rand –
Sustainable design



Tessy Plastics –
New product
design & analysis



Unilever –
Generative design
technology



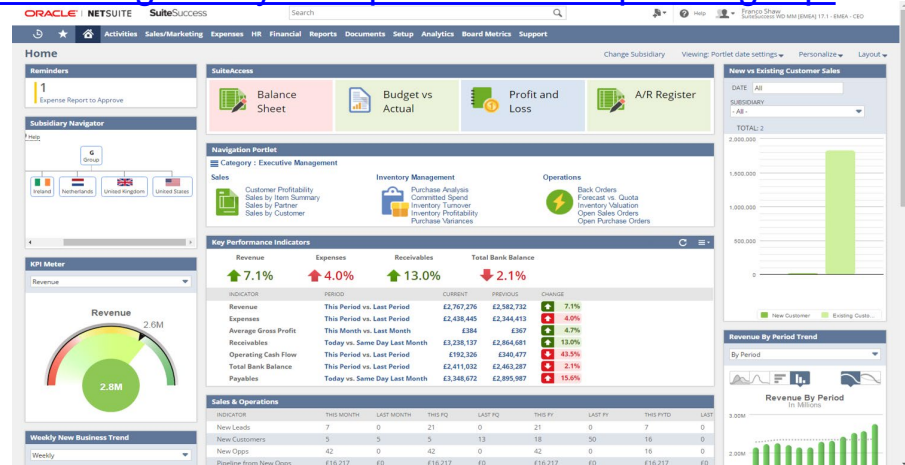
Ortho Clinical –
Design and material
efficiency

What is ERP?

- Enterprise resource planning (**ERP**) is **defined** as the ability to deliver an integrated suite of business applications. **ERP** tools share a common process and data model, covering broad and deep operational end-to-end processes, such as those found in finance, HR, distribution, manufacturing, service and the supply chain. <https://www.gartner.com/it-glossary/enterprise-resource-planning-erp/>

Carrier Code	Carrier Name	Carrier Service ID	Carrier Service	Carr Rate	Currency	Transit Tm	Delivery Date	Priority
FDXG	FedEx Ground	FEDEX_GROUND	FedEx Ground	6.12	USD	5.00	11/20/2010	1
FDXE	FedEx Express	FEDEX_EXPRESS_SAVER	FedEx Express Saver	14.74	USD	3.00	11/19/2010	1

SAP



Oracle

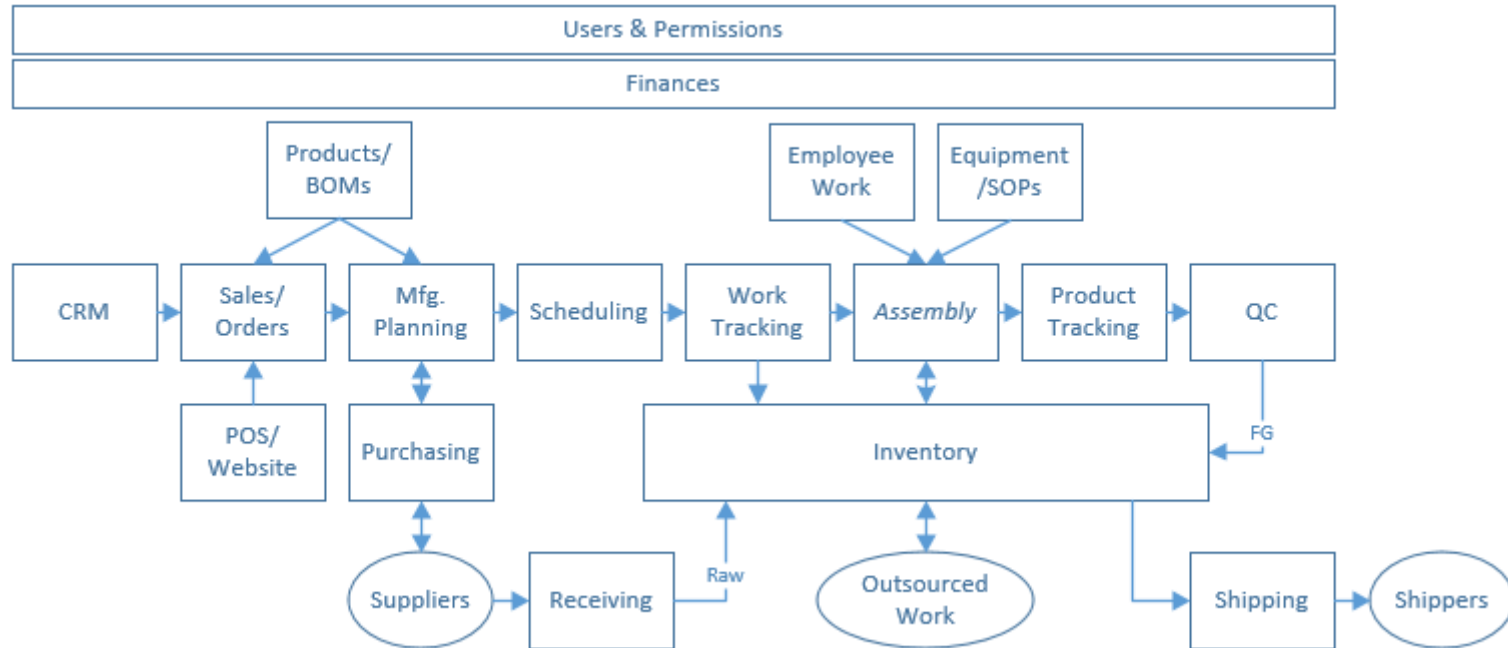
ERP vs. MES vs. MRP...

- **Enterprise Resource Planning**
 - All encompassing
- **Manufacturing Execution System**
 - Detailed planning of production.
- **Materials Resource Planning (as add on)**
 - No longer a standalone product – see ERP.
 - Inventory, production planning. But finance in other system.
- **Many specialized business software**
 - CRM/QMS/PLM/WMS...

QuickBooks with 3rd party add ons

- **QB marketplace has add-ons for Materials Management, Production Planning, CRM, Timecards.**
 - A la carte ERP
 - Fishbowl is a popular MRP add-on.
- **Con: Multiple user interfaces, finger pointing.**

ERP System Overview – Discrete Assembly



Part RAWJ343-0003-002

15ml Disposable Pipets

- VIEW
- EDIT
- BOM USE (3)
- PRICING
- QUOTES (0)
- ORDERS (1)
- SALES HIST (0)
- PQUOTES (0)
- OPEN POS (0)
- WATERFALL
- PO HISTORY (1)
- NCRS (0)
- ECOS (0)
- RMAS (0)
- ORDERS W/ NEED (YES)
- PART REQ (0)
- TOOLS
- HISTORY
- CROSSES (0)
- MAINT +
- REVISIONS
- PRINT LABELS
- DOCUMENTS (0)
- NOTES (0)

PART INFO					
Description	15ml Disposable Pipets			Revision	(unnamed)
Default Cost	\$0.00	Default Resale	\$0.00	Pricing Rules	
Last Buy Cost	\$0.00	Created On	2019-04-12	Shelf Life	0
Revenue G/L Account		COS G/L Account		RoHS	No
Preferred Vendor	BPI	Preferred Manufacturer	BPI Molding	OEM Part #	Pipet, 15ml
UOM	EA	Purchase UOM	EA	Export (ECCN)	

▼ WAREHOUSE: MN - MAIN					
Avg Cost	\$0.00		Warehouse Transfer Vendor Return		
Cost For Loc	\$0.00	Resale For Loc			
QOH	65000 EA	QR	25000 EA	Qty Avail	40000 EA
QOO	0 EA	Total Backlog	0 EA	MOQ	(1 EA)
Std Cost	0	Std Package	500	Lead Time (in weeks)	1
Commodity Code		ABC Code		Country of Origin	
Tariff (HTS)					



Products / [F344-0008-005] Display Carton for Liban MM19-200

EDIT CREATE

Print Action

UPDATE QTY ON HAND REPLENISH

0.000 EA On Hand	0.000 EA Forecasted	Product Moves	Min: 0.00 Max: 0.00	Routes	Lot/Serial Number	50.00 EA Purchased	More
---------------------	------------------------	---------------	------------------------	--------	-------------------	-----------------------	------

Display Carton for Liban MM19-200

- Can be Sold
- Can be Purchased

General Information Purchase Inventory

Product Type	Storable Product	Sales Price	\$ 0.00
Product Category	All	Customer Taxes	Tax 15.00%
Internal Reference	F344-0008-005	TaxCloud Category	
Barcode		Cost	\$ 0.00
		Unit of Measure	EA
		Purchase Unit of Measure	EA

Internal Notes



BOM-Coffee Maker-001 • Default

Update Cost

Browse BOM

New Version

Create ▾



Cancel

👍 0 · 💬 0 FOLLOW

You edited this
22 hours agoYou created this
22 hours ago

Operations

<input type="checkbox"/>	No.	Operation *	Workstation	Operation Time *	Fixed Ti...	Operating Cost (INR)	⚙️
<input type="checkbox"/>	1	Cutting	Fabric Cutting Station	10	<input type="checkbox"/>	₹ 2.92	✎ Edit
<input type="checkbox"/>	2	Labelling	Labelling Station	20	<input type="checkbox"/>	₹ 3.33	✎ Edit
<input type="checkbox"/>	3	Packing	Packing Station	15	<input type="checkbox"/>	₹ 5.00	✎ Edit

Materials

 Quality Inspection Required

Items

<input type="checkbox"/>	No.	Item Code *	Qty *	UOM *	Rate (INR) *	Amount (INR)	⚙️
<input type="checkbox"/>	1	Glass	5	Nos	₹ 0.00	₹ 0.00	✎ Edit
<input type="checkbox"/>	2	Plastic	7	Nos	₹ 5.00	₹ 35.00	✎ Edit
<input type="checkbox"/>	3	Rubber	3	Nos	₹ 3.00	₹ 9.00	✎ Edit

Costing

Operating Cost (INR)

₹ 11.25

Total Cost (INR)

₹ 55.25

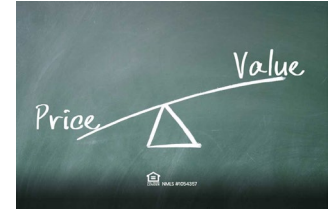
Raw Material Cost (INR)

₹ 44.00

Why business systems like ERP

- **Central resource**
 - Everyone sees the same data.
 - Single source of truth
- **Training on single system.**
- **Connected workflow – Customer order to Shipping**
 - No double entry!
- **Mange Inventory, plan production**
- **Reports on state of the business**
 - Dashboards with KPIs

Key Value Propositions for using ERP systems



- **A real-time 360-degree view** - your entire organization: income, costs, sales, capacity,
- **Data Driven Decision Making** – comprehensive data to make data driven decisions
- **Streamlined Operations** – all department data into a single platform providing transparency of data
- **Real Time Data & Reporting** – display KPIs of inventory, production, resources utilization, etc. with automated reports set to specific frequencies and people

- **Improved Inventory Management** – accurate transactional tracking with cost, volume and allocation to committed and potential jobs
- **Improved Supply Chain Management** – full procurement activities integrated into the system
- **Shop Floor Labor and Job Tracking** – Full production tracking of material, labor, production status and work center. Real time updates of ahead or behind delivery date
- **Manufacturing management** – scheduling, forecasting, resource planning, capacity planning

- **Scalability** – Enterprise systems are designed to grow with your growth
- **Data Security** - single database allows for multiple redundancies of security authentication
- **Compliance** - accurate up-to-date searchable records to comply with regulations
- **Organized Work Flows** – digitally move work from one department to another

When to implement an ERP application

- **Product complexity**
 - Lots of configurations
- **Manufacturing complexity**
 - Complex process routing/outsourcing/process timing
- **Supply Chain complexity**
 - Multiple vendors/multiple purchasing units/variable lead times
- **Oversite**
 - Business KPIs
 - Regulatory requirements

Different ERP Solutions

- **Industry Segmentation**
 - Aerospace, mining, food, machine shops, ship building, hospitals, distribution....
- **Manufacturing Modes**
 - Discrete, Engineered to order, job shop, light assembly....
- **Company size**
- **Product Differentiators**
 - Industry specific tools. i.e. stock calculators for machine shops.
 - Business process for industry regulatory requirements.
- **Avoid Customizations!**

Package Listing Sites

- <https://www.top10erp.org/>
 - An online database of ERP options that can be sorted by industry. It provides a clear listing of major features for each package.
- <https://www.erpfocus.com/>
 - A resource center with guides and some recommendations for utilizing industry-specific features of an ERP.
- <https://sourceforge.net/directory/business-enterprise/enterprise/erp/>
 - This site has one of the largest lists of ERP product packages available (937 as of this writing this article). It allows you to build a list of different packages and to compare features between them.
- <https://blog.capterra.com/free-open-source-erp-software/>
 - This is a go-to stop for reviewing open-source ERP platform options.
- <https://www.g2.com/categories/erp-systems>
 - Review and comparison site.

Picking package

- **Pre-work**
 - What are your most complex process
 - Critical and Important features
 - Budget
- **Approach as a Selection Funnel**
 - Packages that target your industry, manufacturing approach and company size
 - Check out vendor websites and review sites
 - YouTube videos
 - Engage vendor sales – get demos

Importance of Training

- **Adequate time for training of staff before go live**
 - Training of managers on analysis features.
- **Documentation for common ERP tasks**
 - Vendor how-to videos, YouTube videos
 - Company Standard Operating Procedures
- **Importance of complete data**
- **Need detailed oriented super user**
- **Complex packages => More powerful tools**

Closing Comments

- **It is better to be centrally organized than distributed disorganized.**
- **You will be living with the software for years. Not the time to go cheap.**
- **It is a commitment!**

Scott Nichols
Rochester Institute of Technology
Scott.Nichols@rit.edu

RIT

Thank you

Scott Nichols
Rochester Institute of Technology
Scott.Nichols@rit.edu